



**Sprint PCS Connection Card™  
by Novatel Wireless  
Merlin S620**



**[www.sprint.com](http://www.sprint.com)**

© 2005 Sprint Nextel. All rights reserved. No reproduction in whole or in part without prior written approval. Sprint, the "Going Forward" logo, the NEXTEL name and logo, and other trademarks are trademarks of Sprint Nextel.

# Table of Contents

---

<b>Welcome to Sprint</b> .....	<b>i</b>
<b>Introduction</b> .....	<b>ii</b>
<b>Section 1: Sprint PCS Connection Card Basics</b> .....	<b>1</b>
<b>1A. Introducing the Sprint PCS Connection Card</b> .....	<b>2</b>
Your Sprint PCS Connection Card .....	3
A Network Card .....	4
Package Contents .....	4
About This Guide .....	5
<b>1B. Getting Started With Your Sprint PCS Connection Card</b> .....	<b>6</b>
Getting Started .....	7
The Sprint PCS Connection Card Software .....	7
Activating and Using Sprint PCS Service .....	8
Care and Maintenance .....	9
<b>Section 2: Using the Sprint PCS Connection Card</b> .....	<b>10</b>
<b>2A. Installing the Sprint PCS Connection Card</b> .....	<b>11</b>
Getting Started .....	12
Installing the Sprint PCS Connection Manager Software .....	14
Inserting and Removing the Sprint PCS Connection Card .....	17
Activating Your Sprint PCS Connection Card .....	20
<b>2B. Sprint PCS Connection Manager Software</b> .....	<b>22</b>
The Sprint PCS Connection Manager Software .....	23
The Sprint PCS Connection Manager Software Window .....	24
System Tray Icons .....	30
Establishing and Terminating Connections .....	30
Sprint PCS Connection Manager Software Menu Options and Settings .....	30
<b>2C. Menu Options</b> .....	<b>31</b>
Overview of Menu Items .....	32
Menu Item Details .....	34
Settings .....	36
<b>2D. Troubleshooting Tips</b> .....	<b>41</b>
Problem Causes and Suggestions .....	42
Reinstalling the Sprint PCS Connection Card Driver .....	44
Additional Troubleshooting Tools .....	49

**Section 3: Sprint PCS Vision .....51**

- 3A. Sprint PCS Vision .....52**
  - Web .....53
  - Messaging .....54
  - Sprint PCS Business ConnectionSM Personal Edition .....55
  - Sprint PCS Vision FAQs .....56

**Section 4: Technical Specifications and Regulatory Information .....57**

- 4A. Technical Specifications .....58**
  - Environmental Specifications .....59
  - Mechanical Specifications .....59
  - Software Specifications .....60
  - Transmitter Specifications .....61
  - Receiver Specifications .....62
  - Hardware Specifications .....63
  - Miscellaneous .....63
- 4B. Regulatory Information .....64**
  - Regulatory Notices .....65

**Section 5: Safety Information and Terms & Conditions .....67**

- 5A. Safety and Notices .....68**
  - Important Notice .....69
  - Safety and Hazards .....69
- 5B. Terms and Conditions .....70**
  - Terms and Conditions of Service .....71

**Index .....79**

# Welcome to Sprint

---

**Sprint is committed to bringing you the best wireless technology available.** We built our complete, nationwide network from the ground up, so all your services will work the same wherever you go on the Nationwide Sprint PCS Network.

This guide will familiarize you with our technology and your new Sprint PCS Phone through simple, easy-to-follow instructions. It's all right here—from setting up your account passwords and voicemail to using the most advanced features of Sprint PCS Vision.<sup>SM</sup>

**Welcome and thank you for choosing Sprint.**

# Introduction

---

This User's Guide introduces you to Sprint PCS Service and all the features of your new Sprint PCS Connection Card. It's divided into five sections:

- ◆ **Section 1:** Sprint PCS Connection Card™ Basics
- ◆ **Section 2:** Using the Sprint PCS Connection Card
- ◆ **Section 3:** Sprint PCS Vision<sup>SM</sup>
- ◆ **Section 4:** Technical Specifications and Regulatory Information
- ◆ **Section 5:** Safety Information and Terms & Conditions

Throughout the guide, you'll find tips that highlight special shortcuts and timely reminders to help you make the most of your wireless network card and service. The Table of Contents and Index will help you locate specific information quickly.

You'll get the most out of your new Sprint PCS Connection Card if you read each section. However, if you'd like to get right to a specific feature, you can go directly to that page. Follow the instructions in that section and you'll be ready to use your card in no time.

<b>Note:</b>	You can print out this guide to keep on hand or view it online. If you're viewing it online, simply click on a topic in the Table of Contents or on any page reference within a section to go directly to that topic.
--------------	---

# **Sprint PCS Connection Card Basics**



# Introducing the Sprint PCS Connection Card™

## In This Section

---

- ◆ **Your Sprint PCS Connection Card**
  - ◆ **A Network Card**
  - ◆ **Package Contents**
  - ◆ **About This Guide**
- 

This section introduces the basic features and functions of your Sprint PCS Connection Card, the materials included with your card, and an overview of the sections in this User's Guide.

# Your Sprint PCS Connection Card

---

Your Sprint PCS Connection Card fits into a Type II PC Card slot (available on most notebook PCs) and functions as a wireless network card.

This card allows you to:

- Access your company network
- Send and receive email
- Access the Internet

## CDMA Networks

The Sprint PCS Connection Card operates over a type of wireless network called CDMA (Code Division Multiple Access). This network technology has many features beyond providing a wireless link, such as Web Messaging, which allows you to receive short messages using the Sprint PCS Connection Card.

To use the Sprint PCS Connection Card, you need an account that gives you access to a CDMA network.

Every CDMA network operates on one of three radio frequency bands. Your Sprint PCS Connection Card by Novatel Wireless Merlin S620 leverages the high-speed CDMA 1xEV-DO network and operates on the 1900 MHz band.

The Sprint PCS Connection Card utilizes CDMA 1xEV-DO technology that is backwards compatible with 1xRTT, enabling real-time high-speed wireless access to email, the Internet, or your company network. The card runs on most current Windows-compatible laptop or desktop computers, and it provides data transmission of up to 2.4 Megabits per second (Mbps) (average speed of 300-800 kbps before bandwidth optimization).

**Tip:**

More information about CDMA networks is available on the CDMA Development Group Web site, [www.cdg.org](http://www.cdg.org).

# A Network Card

---

During Sprint PCS Vision<sup>SM</sup> connections, the Sprint PCS Connection Card is a true network card, functioning just like the network cards familiar to most business computer users. Once installed configured for NDIS mode, the card connects instantly to the CDMA network with just a few mouse clicks. To surf the Web, you can just insert the card, click a few buttons, and launch your Internet browser. To access your company network, you may need to launch an extranet client after you connect to the CDMA network.

**Tip:**

To optimize your settings for faster speeds and data conservation when accessing your company network, work in "Offline" mode and synchronize periodically to send and receive company email. Do not use the Preview Pane; also, save or drag and drop attachments to a desktop folder before opening them (rather than double-clicking them in the email). For more detailed information, access the Microsoft whitepaper at <http://www.microsoft.com/office/outlook/evaluation/perform.doc>.

## Package Contents

---

Your Sprint PCS Connection Card package contains the following components:

- Sprint PCS Connection Card<sup>TM</sup> by Novatel Wireless (Merlin S620<sup>TM</sup>)
- A Guide to Using Your Sprint PCS Connection Card<sup>TM</sup>
- Sprint PCS Connection Manager<sup>SM</sup> CD

## About This Guide

---

This User's Guide is designed to provide you with all the information you need to install and use your Sprint PCS Connection Card.

- **Section 1** (which you are reading) gives you an overview of the card and its basic features.
- **Section 2** provides detailed, step-by-step instructions for installing and using the Sprint PCS Connection Card and Sprint PCS Connection Manager Software.
- **Section 3** introduces Sprint PCS Vision Services.
- **Section 4** provides electrical, radio frequency, and other specifications for the Sprint PCS Connection Card, as well as regulatory notices concerning your Sprint PCS Connection Card.
- **Section 5** provides important safety and liability information and includes the Terms and Conditions of use for the Sprint PCS Connection Card.

# Getting Started With Your Sprint PCS Connection Card™

## In This Section

---

- ◆ Getting Started
  - ◆ The Sprint PCS Connection Card Software
  - ◆ Activating and Using Sprint PCS Service
  - ◆ Care and Maintenance
- 

This section outlines the basics of getting started with your Sprint PCS Connection Card, including installing the Sprint PCS Connection Manager<sup>SM</sup> Software and inserting and activating your card.

# Getting Started

---

**Before you can begin using your Sprint PCS Connection Card, you must:**

1. Install the Sprint PCS Connection Manager™ Software, including the Sprint PCS Connection Card driver software.
2. Activate your Sprint PCS Account (unless the card has been pre-activated).
3. Configure the Sprint PCS Connection Card to use your account.

## The Sprint PCS Connection Card Software

---

The Sprint PCS Connection Card comes with the following software:

- **Sprint PCS Connection Manager Software** allows you to manage the card's actions and monitor your connections.
- The **driver software** establishes the interface between the card and your Windows® operating system.
- With **Novatel Wireless Connections Network Adapter (NDIS)** you can expand your high-speed broadband wireless connection from the Internet to your corporate email and network leveraging 1xEVDO speeds. This customizable feature enables an always-on connectivity experience like an Ethernet card.
- The **Bytemobile Optimization Client** allows you to enjoy increased speeds and enhanced graphics to further improve your experience with image and data optimization in an easy to use visual interface.

The software must be installed before you insert the Sprint PCS Connection Card for the first time. Detailed instructions are provided, starting on page 11.

# Activating and Using Sprint PCS Service

---

Before using your Sprint PCS Connection Card, you must first set up your Sprint PCS wireless network account.

## Call Sprint Customer Service

- If you will be using your Sprint PCS Connection Card primarily for business purposes, call **1-877-789-3969**.
- If your card is intended primarily for personal use, call **1-888-715-4588**.

You should have the following information available:

- Your billing address
- Your Social Security number or Tax ID number
- Your driver's license number
- Your Sprint PCS Connection Card's ESN (electronic serial number).

The ESN is printed on the card's label and can also be displayed during the installation process.

- A pen and paper to write down your account information

During this call, Sprint Customer Service will help you select your service plan and guide you through the activation process. They will also provide you with the following important account information:

- Your card's Activation Code
- Your card's Phone Number
- Your card's Lock Code

### Tip:

You can use the Lock Code feature to prevent others from using your account should your Sprint PCS Connection Card be lost or stolen. See page 38 for instructions on using this feature.

Unless your card has been pre-activated, the Sprint PCS Connection Manager Software application will automatically detect that no account has been configured when you run it for the first time. The Sprint Activation Wizard will then launch and guide you through the activation and configuration process.

## Care and Maintenance

---

As with any electronic device, the Sprint PCS Connection Card must be handled with care to ensure reliable operation. Follow these guidelines while using and storing the card:

- Do not apply adhesive labels to the card. They may cause the card to become jammed inside the card slot.
- The card should fit easily into your Type II PC Card slot. Forcing the card into a slot may damage the connector pins.
- Protect the card from liquids, dust, and excessive heat.
- When not installed in your computer, store your Merlin S620 in a safe place.
- Never force the Sprint PCS Connection Card in or out of your computer's PC Card slot.
- When moving your computer, always remove the Sprint PCS Connection Card from the PC Card slot to avoid any damage (see page 18 for instructions on proper removal).

# Using the Sprint PCS Connection Card



# Installing the Sprint PCS Connection Card

## In This Section

---

- ◆ Getting Started
  - ◆ Installing the Sprint PCS Connection Manager Software
  - ◆ Inserting and Removing the Sprint PCS Connection Card
  - ◆ Activating Your Sprint PCS Connection Card
- 

This section guides you through the steps necessary to install your Sprint PCS Connection Card™ and make it operational on a notebook PC.

# Getting Started

---

**Before you can use your new Sprint PCS Connection Card, you must first:**

1. Install the Sprint PCS Connection Manager<sup>SM</sup> Software, located on the installation CD, onto your computer.

**Note:** Before installing your new software, delete or uninstall any previously existing modem or dialer software from your system.

Do not insert the Sprint PCS Connection Card into the slot until you have installed the Sprint PCS Connection Manager Software onto your PC or until instructed to do so by the installation CD.

2. Insert the card into your computer's PC Card slot (Sprint label facing up). Windows will detect the card and automatically install the necessary card drivers.

**Note:** A driver is software that forms the interface between a device (such as the Sprint PCS Connection Card) and the operating system on your PC.

3. Launch the Sprint PCS Connection Manager Software application.
4. Activate your Sprint PCS Connection Card and Account, unless it was pre-activated. If your card has not previously been activated, the Activation Wizard will automatically launch and guide you through the process.

## System Requirements

The Sprint PCS Connection Card is supported on the following operating systems:

- Windows® 2000
- Windows® XP

To install and run the Sprint PCS Connection Card and accompanying Sprint PCS Connection Manager Software, your system requires these minimum resources:

<b>CPU</b>	Pentium (166 MHz or higher)
<b>Card Slots</b>	Type II PC Card Slot (32 bit bus)
<b>Communications Ports</b>	2 available; one modem & one serial
<b>Disk Drive</b>	CD-ROM
<b>I/O Resources</b>	1 IRQ, 4096 bytes I/O space
<b>Memory</b>	32 MB
<b>Disk Space</b>	14 MB

# Installing the Sprint PCS Connection Manager Software

---

Follow the instructions below to install the Sprint PCS Connection Manager Software from the installation CD. This process requires you to restart your PC at the end of the installation; therefore, we recommend that you quit all open applications before you begin installation. The Sprint PCS Connection Manager Software automatically determines your PC's operating system and installs all appropriate software.

**Note:** You may be required to log in with administrative privileges depending on your operating system to install the Sprint PCS Connection Manager Software.

## Installing the Sprint PCS Connection Manager Software and the Sprint PCS Connection Card driver:

1. Insert the installation CD into your CD-ROM drive. The Setup program should launch automatically. If the Setup program does not launch, select **Start > Run** and enter **d:\Launch.exe**, where **d** is your CD-ROM drive letter.
2. Select **Install Sprint PCS Connection Manager**. (The InstallShield Wizard will launch and guide you through the installation process.)
3. Use the **Next** and **Back** buttons to navigate through the installation wizard, noting the following:
  - In order to continue with the installation, you must click **Yes** to accept the terms of the License Agreement.
  - Select the default option, **Sprint PCS Connection Card by Novatel Wireless**, and click **Next** on the Select your Card screen.
  - Please wait a few minutes while the software installs.

**Note:** The Bytemobile Optimization Client feature may also be selected at this time. This option provides increased speeds and enhanced graphics to further improve your experience with image and data optimization in an easy-to-use visual interface. Place a checkmark in the checkbox to add Bytemobile Optimization. If you wish install Bytemobile later, you may do so directly from your Installation CD.

4. Skip to step 7 if you did *not* check the Bytemobile Optimization Client option from the Sprint PCS Connection Manager Installer screen (see Note above).

5. If you chose to install the the Bytemobile Optimization Client, the Installshield Wizard and ByteMobile Optimization Welcome window appear. Click **Next** and wait a few moments for the software to install.
6. Now click **Finish** to complete installation of Bytemobile.
7. Click **Restart** or **Finish** to complete installation of the Sprint PCS Connection Manager. Once the installation procedure is complete and you have rebooted your computer (either automatically or manually), launch Sprint PCS Connection Manager by clicking on the Sprint PCS Connection Manager desktop icon.



Sprint PCS  
Connection  
Manager

8. The Sprint PCS Connection Manager launches and the Insert your card... dialog appears. (Do not insert the card until instructed to do so by the Sprint PCS Connection Manager.)
9. Insert the Sprint PCS Connection Card into your notebook PC's Type II PCMCIA PC Card Slot with the Sprint label facing up. (See page 17 for complete instructions on proper insertion and removal.)

**Note:** Sprint PCS Connection Manager will check to ensure you have the latest firmware installed. If there is a new firmware release for the software, the 'Firmware Update' pop-up dialog will appear. See "Firmware Updates" in this section, beginning on page 16.

10. Please wait a few moments while Windows automatically installs the necessary drivers for this device. A series of Found New Hardware messages appear and the Found New Hardware Wizard launches.
11. If your Sprint PCS Connection Card has not been activated, the Activation Wizard automatically launches and guides you through the activation process. (For account activation information, see Section 1B, "Getting Started With Your Sprint PCS Connection Card" beginning on page 6.)

**Note:** Do not forcefully insert the Sprint PCS Connection Card. This may damage the connector pins.

12. Windows detects the new hardware (Sprint PCS Connection Card) and installs the necessary drivers. The **Add New Hardware Wizard** or **Found New Hardware Wizard** launches, depending on your operating system. (For additional information about driver installation, see “Reinstalling the Sprint PCS Connection Card Driver” on page 44.)
13. Follow the onscreen prompts to allow the wizard to install the drivers.
14. Click **OK** when you are notified that the installation is complete.

On completion of this step, the Sprint PCS Connection Manager Software and the Sprint PCS Connection Card driver are installed and you can proceed to activate your card (if it has not already been activated). See “Activating and Using Sprint PCS Service” on page 8.

## Firmware Updates

The first time you attempt to connect your Merlin S620 to your computer, Sprint PCS Connection Manager will check to ensure you have the latest firmware installed. If the Sprint PCS Connection Manager detects that your card needs to be updated a 'Firmware Update' pop-up dialog appears.

### To update firmware

1. The AC power adapter must be plugged into your computer before proceeding.
2. Click **OK** to launch the firmware update utility and update the firmware in your card. The software installation begins. This process takes approximately five minutes. You may stop the installation at any time by clicking **Cancel**.

<b>Caution:</b>	Do not remove the Merlin S620 from your computer's PC Card slot until the installation process is complete. Failure to complete the process may result in serious errors.
-----------------	---

3. Once the firmware has been successfully downloaded, a confirmation screen appears. Click **OK** to return to the Sprint PCS Connection Manager main user interface.

4. When the firmware update is completed, it will reset the card. Please wait a few minutes to initialize the Merlin S60 card from the Sprint PCS network. If the card has not been activated, it will automatically launch the Sprint PCS Vision Activation Wizard.

**Note:** During this time, the Sprint PCS Connection Manager message area displays “Updating Hardware” and the Go button is disabled.

Once the card is provisioned successfully, it will start IOTA (Internet Over-the-Air) Activation to update your user profile from the Sprint PCS network settings. If the card is not provisioned or out of Sprint 3G service coverage, the Sprint PCS Vision User Interface will display “Sprint PCS Vision: Searching for service...”.

## Inserting and Removing the Sprint PCS Connection Card

---

### Inserting the Sprint PCS Connection Card

Before you insert the Sprint PCS Connection Card, you must first install the Sprint PCS Connection Manager Software (see page 14 in this section). Once you have completed the software installation procedure, you may insert your card into your computer’s PC Card slot. The Sprint label should be facing up and the 68-pin connector, located at the end of the card, should be inserted directly into the computer’s PC Card slot.

**Note:** The Sprint PCS Connection Card should fit snugly, but you should be able to insert or remove it easily from your computer’s PC Card slot.

A portion (the black section) of the card will remain outside the PC Card slot. This section contains the card’s antenna and the LED (light emitting diode). Because the card is not entirely contained in your computer’s PC Card slot, it is important to remove the card when transporting your notebook or Tablet PC.

When you insert the card, the following should occur:

- If sound effects are enabled, the PC beeps.
- The Unplug/Eject Hardware icon appears in the system tray (unless the feature has been disabled).



- The Sprint PCS Connection Manager Software launches (unless the auto-launch feature has been disabled).

The card is powered as soon as you insert it.

### Turning off the Sprint PCS Connection Card

When the Sprint PCS Connection Card is connected to the computer, it has power and is trying to communicate with the network. To turn off the card, the Sprint PCS Connection Manager software must be closed and the card must be properly ejected from the PC Card slot.

### Removing the Sprint PCS Connection Card

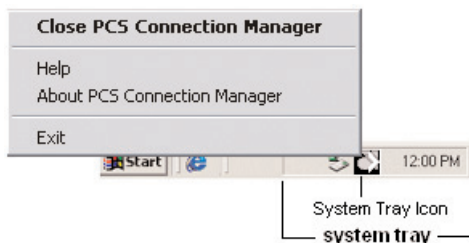
1. Close the Sprint PCS Connection Manager program if it is running. There are three ways to close the program:

- Click the close icon on the interface.



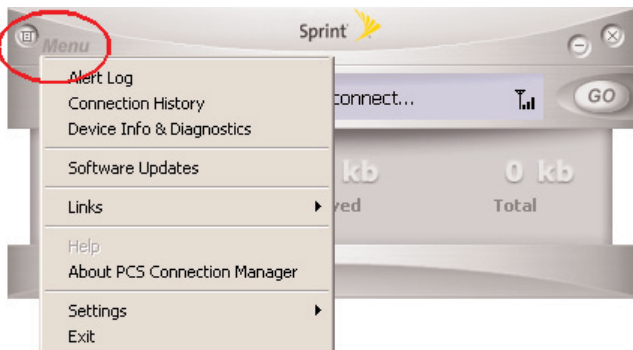
— or —

- Right-click the Sprint PCS Connection Manager system tray icon and select **Exit** from the menu.

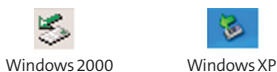


— or —

- Click **Menu** in the upper left-hand corner of the Sprint PCS Connection Manager window and select **Exit**.



- Left-click the Unplug/Eject Hardware icon in the system tray. A message bar appears.



- Click "Safely remove NEC PCI to USB Open Host Controller." A dialog box notifies you that it is safe to remove the card.



**Windows 2000:** Once the Safe to Remove Hardware message appears, click **OK** and use the ejector button (most laptops have an ejector button located next to the PC Card slot) to remove the card.

**Windows XP:** Once the Safe to Remove Hardware message appears in the system tray, use the ejector button (most laptops have an ejector button located next to the PC Card slot) to remove the card.

- Remove the Merlin S620 from your computer's PC Card slot by gripping the card by both of its sides and pulling straight out. (If available, use your computer's card ejector tool.)

## Activating Your Sprint PCS Connection Card

The final step to making your Sprint PCS Connection Card operational is configuring it to use your account.

**Tip:** For an overview of account activation and configuration, see “Activating and Using Sprint PCS Service” on page 8.

If you purchased a pre-activated Sprint PCS Connection Card, this step is not necessary. Once the application software and driver are installed, the card is ready for use.

Otherwise, you must use the Sprint Activation Wizard to activate and configure your account. Activation involves phoning Sprint Customer Service, exchanging information and entering your account information into the appropriate fields in the wizard.

### To activate an account and configure your Sprint PCS Connection Card:

1. Insert the card into your PC Card slot. The Activation Wizard will launch automatically.
2. Click **Next** to begin the activation process. The wizard will guide you through the process.

**Note:** Sprint PCS Connection Manager checks to ensure you have the latest firmware installed. If there is a new firmware release for the software, the 'Firmware Update' pop-up dialog appears.

3. Please telephone Sprint Customer Service to set up your Sprint PCS wireless network account.
  - If you will be using your Sprint PCS Connection Card primarily for business purposes, call 1-877-789-3969.
  - If your card is intended primarily for personal use, call 1-888-715-4588.

You should have the following information available:

- Your billing address
- Your Social Security or Tax ID number
- Your driver's license number
- Your Sprint PCS Connection Card's ESN (electronic serial number)  
The ESN is printed on the card's label and can also be displayed during the installation process.
- A pen and paper to write down your account information

Inform your Sprint Customer Service Specialist that you are activating a Sprint PCS Connection Card by Novatel Wireless (Merlin S620). During this call, Sprint Customer Service will help you choose a service plan and guide you through the activation process.

4. Click **Next** when you are asked for your card's ESN (electronic serial number). The third window will appear, which displays your card's ESN in the top field.
5. Carefully repeat the ESN to the Service Representative. You will be given an activation code.
6. Enter the activation code into the bottom field of the window and click **Next** to continue to the next window.
7. Once your Sprint Customer Service Specialist has given you your card's phone number (also called MDN), and MSID (IMSI\_S) numbers, enter them in the top and bottom fields. and click **Next** to continue.
8. A confirmation screen appears. Verify that your phone number (MDN) and MSID (IMSI\_S) are correct. Be sure to write these numbers down for future reference. Click **Yes** to continue.
9. You have now successfully completed the activation process. Click **Finish** to exit the Sprint Activation Wizard.

**Note:** You may manually access the Activation Wizard from the Sprint PCS Connection Manager sub menu. See "Sprint PCS Vision - Novatel Wireless" on page 38.

On completion of this step, your Sprint PCS Connection Card is ready for use. Section 2B: Sprint PCS Connection Manager Software, beginning on page 22, explains how to use the Sprint PCS Connection Manager Software to manage and monitor your connections.

# Sprint PCS Connection Manager<sup>SM</sup> Software

## In This Section

---

- ◆ **The Sprint PCS Connection Manager<sup>SM</sup> Software**
  - ◆ **The Sprint PCS Connection Manager Software Window**
  - ◆ **System Tray Icons**
  - ◆ **Establishing and Terminating Connections**
  - ◆ **Sprint PCS Connection Manager Software Menu Options and Settings**
- 

This chapter outlines the Sprint PCS Connection Manager Software interface for your notebook PC, including the components of the main window, button usage, system tray icons, and more. Once you've mastered the basics here, you'll be ready to begin using your Sprint PCS Connection Card<sup>SM</sup>.

# The Sprint PCS Connection Manager Software

---

Sprint PCS Connection Manager Software allows you to manage and monitor the connection between your Sprint PCS Connection Card and the CDMA network. Use the software to:

- Determine your signal strength, roaming status, Sprint PCS Vision<sup>SM</sup> availability, and other network parameters.
- Initiate data calls.
- View call statistics.
- Enable and disable features such as Always on Top (which allows you to set the card software to display in front of other application windows).
- Set options related to Web messages, sounds played, and the lock code security feature (which you can use to prevent others from using your card).

You must run the Sprint PCS Connection Manager Software anytime you use the Sprint PCS Connection Card unless you have configured the card to run in NDIS mode with Novatel Wireless Network Adapter. (See “Novatel Wireless Network Adapter [NDIS]” on page 40.)

## Starting the Sprint PCS Connection Manager Software

**To launch the Sprint PCS Connection Manager Software:**

- ▶ Double-click the Sprint PCS Connection Manager desktop icon, located on your desktop



Sprint PCS  
Connection  
Manager

— or —

Select **Start > Programs > Sprint > Merlin S620 > Sprint PCS Connection Manager 3.0**

Depending on your settings in the Options window, the software launches automatically anytime you insert the Sprint PCS Connection Card.

Once you make a connection in the card software, you can launch whichever application you want to use (such as your Web browser or email application).

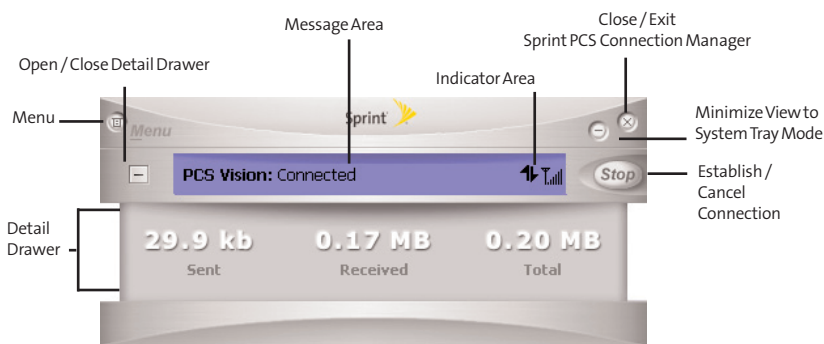
Use the close button in the upper-right corner of the interface to exit the software.



# The Sprint PCS Connection Manager Software Window

The Sprint PCS Connection Manager Software features its own Custom Main Interface (CMI) window. It includes the following components:

- A Menu button in the upper-left corner
- Minimize and Close buttons in the upper-right corner
- A message area (the left portion of the display)
- An indicator area (to the immediate right of the message area)
- A button (“GO”) used to establish/cancel a connection
- A Detail Drawer that displays the amount of data being transferred and received.



## About the Interface

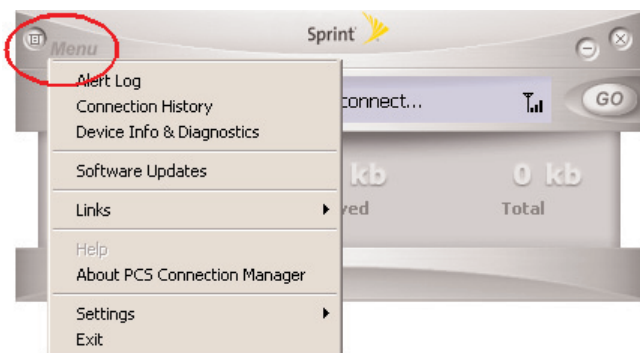
The following application functions are available within the main window of the Sprint PCS Connection Manager Software:

- Close: Closes the interface and Exits the software
- Go: Initiates a connection
- Stop: Ends or cancels a connection
- Minimize: Minimizes the interface to System Tray Mode
- Menu: Provides access to tools and options settings
- Message Area: Displays “Insert your card...,” “Ready,” “Disconnect,” “Connect,” “Authenticating,” “Connecting,” or “Connected” states. Other connection messages may apply depending on your custom options (see page 26 in this section).

- Image Compression (if applicable): Indicates that data and image compression is enabled for enhanced speed performance.
- Transfer/Receive: Visual indicator of data activity
- Signal Strength: Visual indicator of signal strength
- Detail Drawer: Displays byte counter. Click + to expand and - to close.

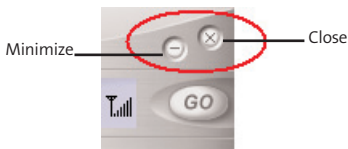
## The Menu Button

Clicking the Menu button, located in the upper-left corner of the interface, provides access to the Sprint PCS Connection Manager Software menu.



Some menu options will remain inactive/unavailable if a connection has not been established. Once a connection is made, the options will become active. The Links menu option and the Settings menu option both contain submenus. See Section 2C, Menu Options, beginning on page 31, for details on the Sprint PCS Connection Manager options and settings.

## The Minimize and Close Buttons



The Minimize button closes the window but leaves the program running. When the program is minimized, its icon in the system tray can be used to determine the card status. (See “System Tray Icons” on page 30.)

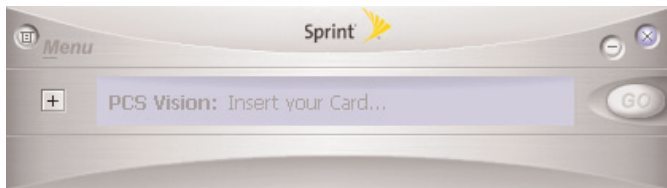
Once minimized, you can redisplay the program by double-clicking the desktop shortcut or launching the card software from the Start menu. (See page 23 in this section.) You can also click the icon in the system tray. (The icons are defined in “System Tray Icons” on page 30.)

The Close button is used to exit the card software.

## Connection Status

The Sprint PCS Connection Manager Software interface provides information about your current connection status. Other messages may appear as a result of customized options.

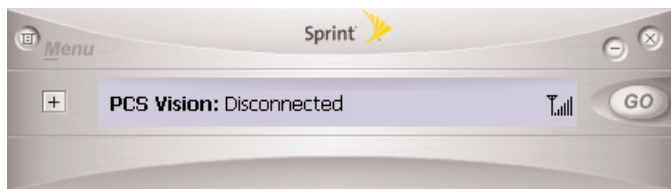
### Insert your Card...



If the Sprint PCS Connection Manager Software fails to detect a Sprint PCS Connection Card, the message “Insert your Card...” displays. In this state, the GO button is unavailable to indicate it cannot be engaged. The signal strength and image compression icons also are not visible.

If the Sprint PCS Connection Manager interface fails to detect the Sprint PCS Connection Card, the message “Insert your Card...” will continue to display.

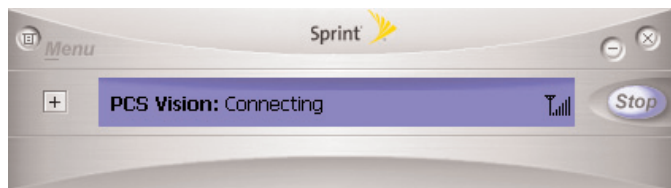
## Disconnected



In this state, the **GO** button is available and the signal strength icon is visible. Click **GO** to initiate a connection.

## Connecting

In this state, the Sprint PCS Connection Manager is attempting to make a connection. During this action, the display will progress from “Connecting” to “Authenticating,” to “Authenticated.” The signal strength icon is visible and the **GO** button changes to **Stop**.

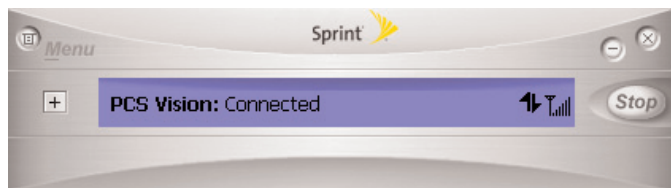


If you attempt to establish a Sprint PCS Vision connection that requires a password, a dialog box appears. Enter the relevant information and click **OK** to continue the connection process.

To cancel the connection, click **Stop**.

## Connected

Once the connection is established, the message area displays “Connected” and the transfer/receive icon is now visible.








For other messages, see “Settings” on page 36 and “Troubleshooting Tips” on page 41.

## Indicator Area

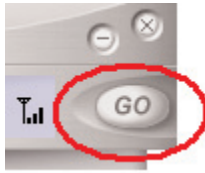
The indicator area displays icons that help you keep track of your signal strength and roaming status, notify you when you receive messages, and indicate whether certain options or features are enabled.

The following table lists the indicator area icons and explains the significance of each icon.

### Indicator Area Icons

Icon	Meaning
	<p>The Signal Strength indicator uses bars to show the strength of the radio signal. The number of bars increases (up to a maximum of six) as the signal strength increases.</p> <p><b>Note:</b> This icon is displayed only when data services are available.</p>
	<p>When no bars are shown, no connection is possible for one of the following reasons:</p> <ul style="list-style-type: none"><li>• You are outside of the Nationwide Sprint PCS Network service area.</li><li>• The signal strength is too weak.</li><li>• A network problem is preventing the Sprint PCS Connection Card from obtaining service.</li></ul>
	<p>The Transmit/Receive icon lets you know that a Sprint PCS Vision data connection is active.</p>
	<p>The optimization image compression software is active.</p>
	<p>The CDMA 1xEVDO icon appears when CDMA 1xEVDO service is available and active.</p>

## The GO Button








The GO button is used to establish and cancel a connection. The text on the button changes during different connection stages.

- **GO**— Ready to establish a connection. Click the button to start a connection.
- **Stop**— Once a connection is established, the **Go** button changes to read **Stop**. A connection is being established or is already established. Click the button to cancel or disconnect.

## System Tray Icons

---

The Sprint PCS Connection Manager Software displays an icon in the system tray (in the lower-right portion of the display screen on your computer). The system tray icon indicates your connection status.

Icon	Meaning
	<b>Connecting</b> - Sprint PCS Connection Card ready for connection or currently making a connection.
	<b>Connected</b> - Connection established to Nationwide Sprint PCS Network and data transfer in process.
	<b>Dormant</b> - Connection established but no data transfer taking place.
	<b>Disconnected</b> - Sprint PCS Connection Manager running, but no connection in progress.
	<b>Error</b> - Sprint PCS Connection Manager has encountered a hardware failure in your computer's modem or other error while attempting to connect.

## Establishing and Terminating Connections

---

The Sprint PCS Connection Manager Software interface can be used to establish and terminate connections with the Sprint PCS Connection Card by simply clicking the **GO** or **Stop** buttons.

## Sprint PCS Connection Manager Software Menu Options and Settings

---

Click the Menu button, located at the upper left of the interface (see page 25), to launch the Sprint PCS Connection Manager menu.

Menu options are described in Section 2C, Menu Options beginning on page 31.

# Menu Options

## In This Section

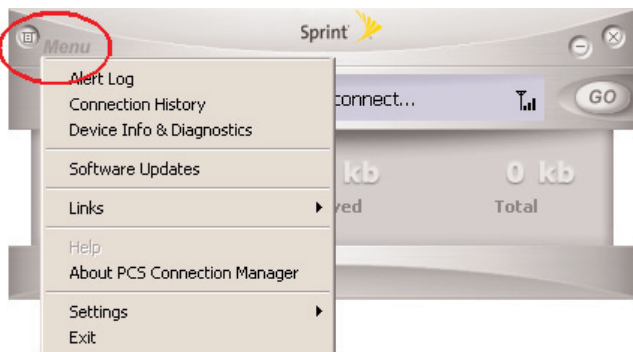
---

- ◆ Overview of Menu Items
  - ◆ Menu Item Details
- 

The Sprint PCS Connection Manager's primary menu options allow you to manage your card's connections and settings. This chapter provides an overview and brief description of each of the options available under the Menu drop-down list.

## Overview of Menu Items

---



To display the Sprint PCS Connection Manager's primary menu, click on the **Menu** button at the top left corner of the interface.

The table on the following page outlines various menu items and provides a brief description and links on where to locate more detailed information about the item.

## Menu Items

Menu Item	Description	For more information, see:
<b>Alert Log</b>	View information on card errors or failures by date/time, alert, connection name, and type.	Page 34
<b>Connection History</b>	View information on data connections by date/time, type, and duration.	Page 34
<b>Device Info &amp; Diagnostics</b>	View detailed information about the Sprint PCS Connection Card, software, and connections.	Page 35
<b>Software Updates</b>	Check for posted updates to the Sprint PCS Connection Manager™ Software or configure to automatically check for updates.	Page 35
<b>Links</b>	When connected to the Nationwide Sprint PCS Network, provides links to the Sprint PCS Web site and the Sprint PCS Business Connection™ Web site.	Page 36
<b>Help</b>	Access the Sprint PCS Connection Manager Help file.	
<b>About Sprint PCS Connection Manager</b>	View the opening Sprint PCS Connection Manager Software identification screen.	Page 36
<b>Settings</b>	Configure the Sprint PCS Connection Manager Software to best suit your needs and preferences.	Page 36
<b>Exit</b>	Close the Sprint PCS Connection Manager Software application.	

# Menu Item Details

---

## Alert Log

The Alert Log provides a record of all alerts that have been generated while establishing and maintaining your connections and settings. You can use the Alert Log to help isolate and resolve connection issues.

### To display the Alert Log:

- ▶ Select **Menu > Alert Log**

### To clear the Alert Log:

1. From the Alert Log window, click **Clear**.
2. You will see a prompt: "Clear all entries from the Alert Log?" Click **Yes** to delete all records. Click **No** to cancel.

## Connection History

The Connection History maintains a record of your data connections. In the Settings window (displayed when you select **Menu > Settings**) on the General tab, you can choose whether or not to keep a connection history.

### To enable or disable Connection History:

- ▶ Select **Menu > Settings > General > Keep Connection History**.

A check mark next to the option indicates that it is enabled.

### To display the Connection History:

- ▶ Select **Menu > Connection History**.

For each message, the Connection History displays:

- The date and time the connection was initiated
- The phone number dialed for data connections
- The type of connection
- The duration of the connection

## Deleting Records

### To delete all records in the Connection History:

1. From the Connection History window, click **Clear**.
2. You will see a prompt: "Clear all entries from the Connection History?" Click **Yes** to delete all records. Click **No** to cancel.

## Device Info & Diagnostics

The Device Info & Diagnostics window displays detailed information about your Sprint PCS Connection Card, Sprint PCS Connection Manager Software, signal strength, port configuration, and more.

The information displayed in this window includes:

- The manufacturer
- Sprint PCS Connection Card Merlin S620
- Your Sprint PCS Connection Card Phone Number
- The hardware version
- The version of software in use
- The Sprint PCS Connection Manager Software version and build
- The version of the PRL (Preferred Roaming List, which specifies the radio frequency channels that the card is permitted to use)
- The card's designed capabilities and coverage
- Various communication and card tests and results

**To access the Device Info & Diagnostics menu:**

- ▶ Select **Menu > Device Info & Diagnostics**.

## Software Updates

From time to time, Sprint may release updates for your Sprint PCS Connection Manager Software. These updates may add new features or improve the network performance. This menu option allows you to check for any posted updates or to set up an automatic monthly check for updates.

**To check for software updates:**

- ▶ Select **Menu > Software Updates > Check Now**.

**To enable or disable automatic monthly checks:**

- ▶ Select **Menu > Software Updates > Check for updates once a month**.

A check mark next to the option indicates that it is enabled. Click **OK** to save changes and exit the Software Updates dialog box.

## Links

During an active Sprint PCS Vision<sup>SM</sup> connection, this menu option provides hyperlinks to the Sprint PCS Web site ([www.sprint.com](http://www.sprint.com)) and the Sprint PCS Business Connection<sup>SM</sup> Web site: ([businessconnection.sprint.com](http://businessconnection.sprint.com)). To access links, select **Menu > Links > Sprint PCS Web Site** or **Sprint PCS Business Connection**.

**Note:** The Sprint PCS Connection Manager Software Links menu does not allow you to add or remove links. Continue to manage direct links to your favorite Web sites through your Web browser menu.

## About Sprint PCS Connection Manager

The About Sprint PCS Connection Manager menu option allows you to display the Sprint PCS Connection Manager Software opening splash screen, which appears when you launch the Sprint PCS Connection Manager Software.

- ▶ Select **Menu > About Sprint PCS Connection Manager**.

## Settings

---

The Settings window from the Menu allows you to configure the Sprint PCS Connection Manager Software to suit your preferences. In the Settings window you can:

- Enable and disable several features, including Window Always on Top and Connection History, set program launch and optimization options, and customize Sprint PCS Vision connection settings.

### To access the Settings menu:

1. Click **Menu** on the Sprint PCS Connection Manager Software interface.
2. Select **Settings** from the submenu.

### Settings Window

The Settings window contains three options:

- General
- Optimization
- Sprint PCS Vision Novatel Wireless

## General

To display the General settings options, select **Menu > Settings > General**. Then you can customize your Sprint PCS Connection Manager by selecting the following options:

- **Play Sound Effects** - Select this checkbox to play a clicking sound whenever an action is taken on the Sprint PCS Connection Manager software.
- **Always on Top** – When checked, the Sprint PCS Connection Manager window displays in front of all other open application windows, even if another window is placed over the Sprint PCS Connection Manager Software window.
- **Start in System Tray** – Select this checkbox to have the Sprint PCS Connection Manager interface visible on your screen regardless of which applications are open.
- **Keep Connection History** – When selected, the Sprint PCS Connection Manager Software logs all connections in the connection history. (For details on Connection History, see page 34.)
- **Launch when Windows Starts** – When selected, the Sprint PCS Connection Manager Software launches automatically upon startup of your computer.

When finished, click **Apply** and then **OK** to save changes and close the Settings dialog box.

## Optimization

To display the Optimization settings menu, select **Menu > Settings > Optimization**. Then check or uncheck the available options to select your image compression setting:

- **Enable Optimization Client** – When selected, the image compression software is enabled.

When finished, click **Apply** and then **OK** to save changes and close the Settings dialog box.

## Sprint PCS Vision - Novatel Wireless

To customize your Sprint PCS Vision - Novatel Wireless settings, select **Menu > Settings > Sprint PCS Vision - Novatel Wireless**, then select from the following menu options:

- **Show Welcome Screen** – Select this checkbox if you would like to have a welcome screen appear upon a successful connection to the Sprint PCS Vision network.
- **Perform Pre-Connect Tests** – Select this checkbox if you would like to see what may have caused a failure if Connection Manager was unable to connect.
- **Enable Network Adapter (NDIS)** – Allows you to establish a Novatel Wireless (1xEV-DO) connection to connect to the Sprint PCS Network automatically without launching Sprint PCS Connection Manager. You can disable the Enable Network Adapter mode at any time by de-selecting the Enable Network Adapter (NDIS) checkbox from this menu.
- **Activation Wizard** – This option is used only when activating a new Sprint PCS device.
- **Change User Lock** – This option enables you to change and customize your User Lock Code. (See below for more information on using your User Lock Code).

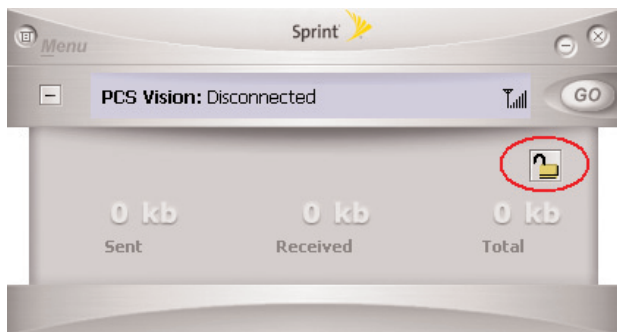
### User Lock Code

The Lock Code feature can be used to prevent others from using your Sprint PCS Connection Card and your account. When the lock code is enabled, the message area will display “Card Locked” and the lock icon will appear in the indicator area.

While the card is in lock mode, you may not launch a data session without first entering your four-digit lock code. The default lock code is the last four digits of your Sprint PCS Connection Card phone number. (See Tip on next page.)

## To enable the lock feature:

1. Click the Locked/Unlocked Icon located in Detail Drawer of the Sprint PCS Connection Manager interface.



2. The Enter User Lock Code window appears.



3. Enter your lock code and click **OK**.

**Tip:** Your default lock code is the last four digits of your Sprint PCS Connection Card's phone number. If you can't recall your card's phone number, go to **Menu>Device Info and Diagnostics** or call Sprint Customer Service at 1-888-211-4PCS (4727).

## To change your lock code:

1. Select **Menu > Settings > Sprint PCS Vision - Novatel Wireless > Change User Lock.**

**Note:** Running the Activation Wizard resets the lock code to the last four digits of the most recently activated phone number.

2. Enter your new four-digit lock code.
3. Re-enter your new lock code.
4. Select a lock status: UnLock to leave Sprint PCS Connection Card unlocked; Lock to enable the lock code feature immediately.

## Novatel Wireless Network Adapter (NDIS)

Enabling the Novatel Wireless Network Adapter enables the always-on connectivity experience like an Ethernet card and eliminates the need to launch and use the Sprint PCS Connection Manager software. As soon as the card is inserted into your PCMCIA slot, the card connects to the network automatically. The connection is also reestablished automatically coming out of hibernate and standby modes.

### To enable the Novatel Wireless Network Adapter:

1. Disconnect the Sprint PCS Connection Card (Merlin S620) from the Sprint PCS Network. (If you are connected to the Sprint PCS network, the Enable Network Adapter [NDIS] checkbox will be disabled.)
2. Access **Menu>Settings>Sprint PCS Vision - Novatel Wireless.**

**Note:** The first time you enable the Network Adapter (NDIS) mode, Windows will automatically install the Network drivers for the Sprint PCS Connection Card - Novatel Wireless EVDO Network Adapter. Once Windows detects the new hardware, a 'Found New Hardware' pop-up message will appear in your system tray followed by the Ready to Use message.

---

Your card must be activated with Sprint PCS and you must be within the Sprint PCS coverage area for your card to work.

3. Place a checkmark in the checkbox designated Enable Network Adapter [NDIS] and click **Apply**, then **OK**.

You may now use the Merlin S620 in NDIS mode and experience automatic connectivity without launching the Sprint PCS Connection Manager.

# Troubleshooting Tips

## In This Section

---

- ◆ **Problem Causes and Suggestions**
  - ◆ **Reinstalling the Sprint PCS Connection Card Driver**
  - ◆ **Resolving Resource Conflicts**
  - ◆ **Additional Troubleshooting Tools**
- 

This section provides assistance in diagnosing and solving many common problems you may experience while using your Sprint PCS Connection Card™ and Sprint PCS Connection Manager™ Software with your notebook PC.

# Problem Causes and Suggestions

---

When properly installed, the Sprint PCS Connection Card™ is a highly reliable product. Most problems are caused by one of these issues:

- The wrong driver has been installed.
- System resources required by the card are being used by other devices.
- Network coverage is not available (either because you are outside the Nationwide Sprint PCS Network or because of an account or network problem).

This section describes how to diagnose and solve these and other problems. If, after reading this section, you are unable to resolve a problem, please visit [www.sprint.com](http://www.sprint.com) or contact Sprint Customer Service at 1-888-211-4PCS (4727).

## **Error: Searching for Sprint PCS Connection Card...**

The Sprint PCS Connection Manager™ Software interface displays this message: “**Searching for Sprint PCS Connection Card...**”

Possible Causes	Suggestions
<p>a. The card is not completely inserted into the PC Card slot.</p> <p>b. The wrong driver is installed for the card.</p> <p>c. There is a resource conflict.</p>	<p>a. Eject and reinsert the card.</p> <p>b. See “Reinstalling the Sprint PCS Connection Card Driver” on page 44.</p> <p>c. See “Resolving Resource Conflicts” on page 47.</p>

## **Error: Splash Screen is Frozen**

The splash screen of the Sprint PCS Connection Manager Software is frozen.

Possible Causes	Suggestions
If you are unable to resolve this problem by restarting your PC, you may have a resource conflict.	See "Resolving Resource Conflicts" on page 47.

## **Error: Not in Service**

The Sprint PCS Connection Manager Software interface displays the message, "Not in Service."

Possible Causes	Suggestions
Inadequate signal strength may occur for any of these reasons: <b>a.</b> You are outside the Nationwide Sprint PCS Network. <b>b.</b> You may be inside a building or near a structure that is causing radio interference.	<b>a.</b> Verify that you are within the Nationwide Sprint PCS Network. Coverage maps are available at <a href="http://www.sprint.com">www.sprint.com</a> . <b>b.</b> Change your location.

## **Error: Connection Gets Dropped (Windows 2000 and XP)**

When attempting a data connection with Sprint PCS Connection Manager Software, the connection gets dropped as soon as it is established (the status goes from "Connecting" and "Connected" back to "Click 'GO' to Connect").

Possible Causes	Suggestions
The connection properties are not optimal.	<ol style="list-style-type: none"><li>1. Click <b>Start &gt; All Programs &gt; Sprint &gt; Merlin S620</b></li><li>2. Click <b>Properties</b>.</li><li>3. Click the <b>Networking</b> tab.</li><li>4. Click <b>Settings</b>.</li><li>5. Ensure that <b>Negotiate multi-link for single-link connections</b> is <u>not</u> selected.</li><li>6. Click <b>OK</b>.</li></ol>

# Reinstalling the Sprint PCS Connection Card Driver

There is a Sprint PCS Connection Card driver for each supported Windows operating system. Unless the appropriate driver for your version of Windows is installed, you will not be able to establish a network connection with the card. This section provides instructions on verifying that you have the correct card driver installed.

**Note:** You must have the Sprint PCS Connection Card installation CD to complete this procedure.

## Windows® 2000

**To verify that the correct driver is installed:**

1. Locate the existing driver.
2. Update the driver.

**To locate the driver:**

1. Close all Windows programs and open the Control Panel by selecting **Start > Settings > Control Panel**.
2. Double-click the **System** icon.
3. Click the **Hardware** tab.
4. Click the **Device Manager** tab.
5. Locate the Sprint PCS Connection Card entries by using the "+" signs to expand the listings. (For example, to see all the installed modems, click the "+" sign to the left of **Modems**.) The card should have three entries:
  - The card should display under Multifunction adapters as Sprint Merlin S620 Modem Parent.
  - The card should display under Modems as Sprint Merlin S620 Modem.
  - The card should display under Network adapters as Sprint Merlin S620 Modem Adapter.

If the listings above do not appear, identify the listing for the Sprint PCS Connection Card by ejecting the card. This causes the driver listing for the card to disappear from the list. Reinsert the card again to cause the driver listing to reappear. You can identify the entries for the Sprint PCS Connection Card by observing which entries are affected when you eject and reinsert the card.

## Updating the Driver

1. If the installation CD is not already in your CD-ROM drive, insert it. If the CD start-up menu appears, use the exit option in the lower-left corner of the screen to exit the menu.
2. Right-click **Sprint Merlin S620 Modem Parent**.
3. Click the **Properties** button.
4. Click the **Driver** tab.
5. Click the **Update Driver...** button to launch the Update Device Driver Wizard.
6. Click **Next**.
7. Select **Display a list of known drivers for this device so that I can choose a specific driver** and click **Next**.
8. Click the **Have Disk...** button.
9. Enter **d:\Drivers\Win2K** (where **d** is the letter of your CD-ROM drive).
10. Click **OK**.
11. If the Digital Signature Not Found window displays, click **Yes**.
12. Click **Finish**. Repeat steps 6-12 as prompted.

If you are prompted to restart your PC, click **Yes**. Otherwise, restart your PC from the Start menu. (You must restart your PC to complete the driver installation.)

The correct driver should then be installed.

## Windows® XP

**To verify that the correct driver is installed:**

1. Uninstall the existing driver.
2. Install the Windows XP driver from the Sprint PCS Connection Card installation CD.

**To uninstall the existing driver:**

1. Open the Control Panel by selecting **Start > Control Panel**.
2. If “Pick a Category” is displayed, select **Switch to Classic View**.
3. Double-click the **System** icon.
4. Click the **Hardware** tab.
5. Click the **Device Manager** button.

6. Locate the Sprint PCS Connection Card entries by using the "+" signs to expand the listings. (For example, to see all the installed modems, click the "+" sign to the left of **Modems**.) The card should have three entries:

- The card should display under Multifunction adapters as Sprint Merlin S620 Modem Parent.
- The card should display under Modems as Sprint Merlin S620 Modem.
- The card should display under Network adapters as Sprint Merlin S620 Modem Adapter.

If the listings above do not appear, identify the listing for the Sprint PCS Connection Card by ejecting the card. This causes the driver listing for the card to disappear from the list. Reinsert the card again to cause the driver listing to reappear. You can identify the entries for the Sprint PCS Connection Card by observing which entries are affected when you eject and reinsert the card.

7. Right-click **Sprint Merlin S620 Modem Parent**.

8. Select **Uninstall** from the pop-up menu.

9. Click **OK** to confirm the uninstall.

The Sprint PCS Connection Card listings should be removed.

## Installing the Windows XP Sprint PCS Connection Card Driver

1. If the installation CD is not already in your CD-ROM drive, insert it. If the CD start-up menu appears, use the exit option in the lower-left corner of the screen to exit the menu.
2. Eject and reinsert the Sprint PCS Connection Card to launch the Found New Hardware Wizard.
3. Select **Install from a list or specific location (Advanced)** on the first window of the Found New Hardware Wizard and click **Next** to proceed.
4. Select the **Search for the best driver in these locations** radio button and the **Include this location in the search** check box, then enter **d:\Drivers\WinXP** (where **d** is the letter of your CD-ROM drive). Click **Next** to proceed to the next window.
5. If a warning appears stating that Sprint PCS Connection Card has not passed Windows Logo testing, click **Continue Anyway**.
6. Click **Finish** and repeat steps 1 to 5 as prompted.

The correct driver is then installed.

## Resolving Resource Conflicts

**Note:** You require your Sprint PCS Connection Card installation CD to complete this procedure.

The Sprint PCS Connection Card requires these system resources:

- 1 IRQ
- 4096 bytes of I/O space
- 2 available communications ports (one modem; one serial)

If these resources are not available to the card, you have a resource conflict. If another PC Card is installed, you may be able to free the necessary resources simply by ejecting the other device. Otherwise, you may need to disable another device (such as an internal modem, infrared device, or network card) to resolve the resource conflict. This section explains how to disable other devices.

## Windows® 2000

### To resolve a resource conflict in Windows 2000:

- ▶ Disable a device (internal modem, infrared device, or network card).

### Disabling an Internal Modem, Infrared Device, or Network Card

1. Close all Windows programs and open the Control Panel by selecting **Start > Settings > Control Panel**.
2. Double-click the **System** icon.
3. Click the **Hardware** tab.
4. Click the **Device Manager** button.
5. Locate the device that you want to disable:
  - If you want to disable an internal modem, expand the Modem tree by clicking the "+" sign to its left.
  - If you want to disable an infrared device, expand the Infrared Devices tree by clicking the "+" sign to its left.
  - If you want to disable a network card, expand the Network Adapters tree by clicking the "+" sign to its left.
6. Right click the device you want to disable, choose **Disable** from the pop-up menu that appears and click **OK**.

## Windows® XP

### To resolve a resource conflict in Windows XP:

- ▶ Disable a device (internal modem, infrared device, or network card)

### Disabling an Internal Modem, Infrared Device, or Network Card

1. Close all Windows programs and open the Control Panel by selecting **Start > Settings > Control Panel**.
2. Double-click the **System** icon.
3. Click the **Hardware** tab.
4. Click the **Device Manager** button.

5. Locate the device that you want to disable:
  - If you want to disable an internal modem, expand the Modem tree by clicking the "+" sign to its left.
  - If you want to disable an infrared device, expand the Infrared Devices tree by clicking the "+" sign to its left.
  - If you want to disable a network card, expand the Network Adapters tree by clicking the "+" sign to its left.
6. Right click the device you want to disable, choose **Disable** from the pop-up menu that appears and click **OK**.

## Additional Troubleshooting Tools

---

### Connection History

Connection History provides you with a detailed record of the connections established using your Sprint PCS Connection Card. Since Connection History allows you to sort records by connection name, you can easily distinguish between personal and business usage.

#### Accessing Connection History

- ▶ Select **Menu > Connection History** from the Sprint PCS Connection Manager Software interface.

#### About Connection History

The Connection History window displays a table with three columns: Date/Time, Type, and Duration.

You can select entries by using the arrow keys or your mouse. Selected entries are highlighted. By default, no entry is selected.

Click the **Clear** button to access the Clear Connection History dialog box. Click **Yes** to confirm the delete or **No** to cancel.

### Alert Log

The Alert Log provides a record of all alerts that have been received while establishing and maintaining your connections. You can use the Alert Log to help isolate and resolve connection issues.

#### Accessing Alert Log

- ▶ Select **Menu > Alert Log** from the Sprint PCS Connection Manager Software interface.

## About Alert Log

The Alert Log displays a table with four columns: Date/Time, Alert, Connection Name, and Type.

You can select entries by using the arrow keys on your keyboard or the mouse. Selected entries are highlighted. By default, no entry is selected.

Click the **Clear** button to access the Clear Alert Log dialog box. Click **Yes** to confirm the delete or **No** to cancel.

## Device Info & Diagnostics

Device Info & Diagnostics can help identify problems associated with connecting to the Nationwide Sprint PCS Network. Device Info & Diagnostics evaluates issues with your USB port, port configuration, Sprint PCS Connection Card signal strength, the Nationwide Sprint PCS Network, and more. Once the program runs a diagnostics check it can recommend possible solutions.

### Accessing Diagnostics

- ▶ Select **Menu > Device Info & Diagnostics** from the Sprint PCS Connection Manager Software interface.

### About Device Info & Diagnostics

The Device Info & Diagnostics dialog box allows you to select a number of ways to troubleshoot or obtain more information about your Sprint PCS Connection Card.

The tests automatically execute when the window opens.

# Sprint PCS Vision<sup>SM</sup>



# Sprint PCS Vision<sup>SM</sup>

## In This Section

---

- ◆ **Web**
  - ◆ **Messaging**
  - ◆ **Sprint PCS Business Connection<sup>SM</sup>**
  - ◆ **Sprint PCS Vision FAQs**
- 

Sprint PCS Vision<sup>SM</sup> brings you clarity you can see and hear, with enhanced, always-on advanced multimedia services like email, Web browsing, and Sprint PCS Business Connection<sup>SM</sup> that are easy to learn and use. This rich, colorful graphic experience is a revolutionary way to look at wireless communications.



### Launching the Web

#### To launch the Web:

1. Launch the Sprint PCS Connection Manager™ Software by double-clicking the icon on your desktop.
2. Click **GO** to launch your Sprint PCS Vision connection.
3. Once your Sprint PCS Vision connection is established, you may launch your browser application (for example, Internet Explorer or Netscape Navigator).

### Your User Name

When you buy a Sprint PCS Connection Card™ and sign up for service, you're automatically assigned a User Name. Then, when you use Sprint PCS Vision services, your User Name is submitted to identify you to the Nationwide Sprint PCS Network. The User Name is also useful as an address for email and text messaging, as a way to personalize Internet services, and as an online virtual identity.

A User Name is typically based on the customer's name and a number, followed by "@sprintpcs.com." For example, the third John Smith to sign up for Sprint PCS Vision services might have jsmith003@sprint.com as his User Name. If you want a particular User Name, you can visit www.sprint.com and get the name you want – as long as nobody else has it.

Your User Name will be automatically programmed into your Sprint PCS Connection Card. You don't have to enter it.



## Messaging

---

### Using Sprint PCS Mail

With Sprint PCS Mail, you can set up an account at no additional charge and perform many of the typical email functions from your Sprint PCS Connection Card that you can from your desktop computer.

You can manage your Sprint PCS Mail Account from your Sprint PCS Connection Card or desktop computer at [www.sprint.com](http://www.sprint.com). You can also access other select email providers from the Web.

### Accessing Sprint PCS Mail Messages

To access Sprint PCS Mail Messages:

1. From the Sprint PCS Web home page, select the **Messaging** folder.
2. Select **E-mail**. If you're a first-time user, prompts will help you set up your email account by establishing a User Name and password.
3. To view your messages, select **Inbox**.
4. Select the message you wish to read.
5. Once you've read a message, use the quick actions at the end of each message (**Erase**, **Reply**, **Reply All** or **Next Message**) or select **Menu** for a full list of options.

### Composing Sprint PCS Mail Messages

To compose a Sprint PCS Mail Message:

1. From the Web home page, select the **Messaging** folder.
2. Select **E-mail**.
3. Select **Compose**.
4. Select **Add Name** to enter the address of the person to whom you're sending a message.
5. Select **Next** to enter the subject of your email and your specific message.
6. Select **Send** when your message is ready to be delivered.



## Sprint PCS Business Connection<sup>SM</sup> Personal Edition

---

Sprint PCS Business Connection<sup>SM</sup> Personal Edition gives you secure, real-time mobile access to your Microsoft® Outlook® or Lotus Notes® email, calendar, company directory, and personal contacts.

Sprint PCS Business Connection Personal Edition delivers the following features:

- **Business email access:** Read, reply to, forward, delete, and compose your company email.
- **Company directory and contacts:** Search, view, call, and email contacts from your company's directory. Do all this and add/edit your personal contacts.
- **Work calendar:** Accept and decline meetings, view daily summaries and details, and navigate to various dates.
- **Files/information on your PC:** Browse folders, download, and view documents from any device using a PC browser or Pocket Internet Explorer.

Sprint PCS Business Connection Personal Edition requires no hardware or software installation on your company's network. Just install the Sprint PCS Business Connection Personal Edition software on your work PC. This allows data to be securely retrieved in real-time by your wireless device when connected to the Nationwide Sprint PCS Network. There is a monthly charge for Sprint PCS Business Connection and usage charges will also apply.

When your work PC isn't on, you can share connections with your co-workers so that you always have access to your email, calendar, and contacts. Your data remains secure behind the corporate firewall and any changes you make on your wireless device are instantly updated on your company server without the need to synchronize.

Additional Sprint PCS Business Connection solutions are available for your company. For more details, visit <http://businessconnection.sprint.com>.

## Sprint PCS Vision FAQs

---

### **How will I know when my Sprint PCS Connection Card is ready for Sprint PCS Vision service?**

Your User Name (for example, [bsmith001@sprint.com](mailto:bsmith001@sprint.com)) will display on the Sprint PCS Connection Manager Software display screen.

### **How do I sign-in for the first time?**

You are automatically signed in to Sprint PCS Vision services when you launch the Sprint PCS Connection Manager Software.

### **How do I know when my Sprint PCS Connection Card is connected to Sprint PCS Vision services?**

Your Sprint PCS Connection Card automatically connects when Sprint PCS Vision service is used or an incoming message arrives.

### **When is my data connection active?**

Your connection is active when data is being transferred and "Connected" appears the Sprint PCS Connection Manager Software display screen.

### **When is my data connection dormant?**

If no data is transmitted or received for approximately 10 seconds, the connection goes dormant. (The connection can go active again quickly.) If no data is transmitted or received for an extended period of time, the connection will terminate.

### **Can I sign out of data services?**

You can sign out without turning off your Sprint PCS Connection Card; however you will not be able to browse the Web or use other Sprint PCS Vision services. You may sign in again at any time. To sign out, go to **Settings > Internet > Sign Out** in the Sprint PCS Connection Manager Software menu.

### **How can I optimize my settings to achieve faster speeds and send and receive less data while dialing into my company network?**

For optimized results, work in "Offline" mode and synchronize periodically to send and receive company email. Also, save or drag-and-drop attachments into desktop folders before opening them (rather than double-clicking them in the email). For more detailed information, access the Microsoft whitepaper at <http://www.microsoft.com/office/outlook/evaluation/perform.doc>.

# Technical Specifications and Regulatory Information

# Technical Specifications

## In This Section

---

- ◆ Environmental Specifications
  - ◆ Mechanical Specifications
  - ◆ Software Specifications
  - ◆ Transmitter & Receiver Specifications
  - ◆ Hardware Specifications
- 

This section outlines the environmental and technical specifications for your new Sprint PCS Connection Card™.

## Environmental Specifications

---

Operating temperature	-20° C to +60° C
Storage temperature	-40° C to +85° C
Humidity	5% to 90% over operating temperature
Vibration stability	5Hz to 500Hz, 0.1 octave/second
Drop	1 meter drop, no damage -- fully operational

## Mechanical Specifications

---

Dimensions (W x D x H)	54mm x 5mm x 122mm
Weight	59 grams
Battery Pack	N/A
LED	Yes
Antenna	Embedded Dual Band Diversity Antenna

# Software Specifications

---

CDMA specification	1xEVDO
Data service	Support
SMS (IS-637)	Currently Not Supported
IOTA	Support
OTAPA (IS-683A)	Support
PRL (preferred roaming list)	Support
Authentication	Support
NAM	1
Mobile IP	Support
WNP (wireless number portability)	Support

## Transmitter Specifications

---

Type of multiplexing	EVDO and 1xRTT
Normal output power	7-10 dBm
TX Max power	23 dBm
Frequency range	1850MHz to 1919MHz
Frequency stability	Compliant with CDG1
Bandwidth	1.25MHz
Occupied bandwidth	1.25MHz
Modulation method	O-QPSK/HPSK
Waveform quality	.944
Conducted spurious emission	Complies with Title 47, Part 24 of the FCC Rules
Common RF impedance	50ohms

## Receiver Specifications

---

Type of receiving	EVDO and 1xRTT
Frequency range	1930MHZ to 1990MHZ
Bandwidth	1.25MHz
Occupied bandwidth	1.25MHz
Modulation method	O-QPSK/HPSK
Receiver sensitivity	-104dBm
Inter-modulation spurious response attenuation	Complies with CDG stage 1
Common RF impedance	50ohms

## Hardware Specifications

---

Interface type	Type II PC Card
Common air interface	1xEVDO
Channel spacing	50 KHz
Chip set	QUALCOMM™ MSM6500
Transmitting (max. data rate)	Forward link: 2.4 Mbps Reverse link: 153.6 kbps
Supply voltage	3.3V
Battery	N/A
Charger (charging time)	N/A
Current consumption Sleep/idle Average in-use Max. (peak)	60mA 400mA 850mA
Communication ports	USB
Voice capability	No support

## Miscellaneous

---

Certification & Approval	FCC (parts 2, 22, & 24, SAR), UL, CDG, etc.
--------------------------	---

# Regulatory Information

## In This Section

---

- ◆ **Warning (EMI) - US FCC Information**
  - ◆ **Warning (EMI) - Canada**
- 

This section outlines important regulatory notices concerning your new Sprint PCS Connection Card™.

## Regulatory Notices

---

This device is compliant with Parts 2, 22, and 24 of the FCC Rules. Operation of this device is subject to the following two conditions:

1. This device may not cause harmful interference, and
2. This device must accept any interference received, including interference that may cause undesirable operations.

FCC guidelines stipulate that the card should be more than 1.5 cm (0.6") from all persons.

### **FCC ID: PKRNVWV620**

**CAUTION** Unauthorized modifications or changes not expressly approved by Sprint Communications Company L.P. could void compliance with regulatory rules and thereby your authority to use this equipment.

**WARNING (EMI) - United States FCC Information** - This equipment has been tested and found to comply with the limits pursuant to Parts 2, 22, and 24 of the FCC Rules. These limits are designed to provide reasonable protection against harmful interference in an appropriate installation. This equipment generates, uses, and can radiate radio frequency energy and, if not installed and used in accordance with the instructions, may cause harmful interference to radio communication. However, there is no guarantee that interference will not occur in a particular installation.

If this equipment does cause harmful interference to radio or television reception, which can be determined by turning the equipment off and on, the user is encouraged to try to correct the interference by one or more of the following measures:

- Reorient or relocate the notebook PC
- Increase the separation between the equipment and receiver
- Connect the equipment into an outlet on a circuit different from that to which the receiver is connected
- Consult the dealer or an experienced radio/TV technician for help

**WARNING (EMI) - Canada** - This digital apparatus does not exceed the Class B limits for radio noise emissions from digital apparatus as set out in the interference causing equipment standard entitled "Digital Apparatus", ICES-003 of the Department of Communications.

Cet appareil numérique respecte les limites de bruits radioélectriques applicables aux appareils numériques de Classe B prescrites dans la norme sur le matériel brouilleur: "Appareils Numériques", NMB-003 édictée par le ministre des Communications.

If you have purchased this product under a United States Government contract, it shall be subject to restrictions as set forth in subparagraph (c)(1)(ii) of Defense Federal Acquisitions Regulations (DFARs) Section 252.227-7013 for Department of Defense contracts, and as set forth in Federal Acquisitions Regulations (FARs) Section 52.227-19 for civilian agency contracts or any successor regulations. If further government regulations apply, it is your responsibility to ensure compliance with such regulations.

# Safety Information and Terms & Conditions



# Safety and Notices

## In This Section

---

- ◆ Important Notice
  - ◆ Safety and Hazards
- 

This section outlines important liability and safety guidelines concerning your new Sprint PCS Connection Card™.

## Important Notice

---

Because of the nature of wireless communications, transmission and reception of data can never be guaranteed. Data may be delayed, corrupted (i.e., have errors), or be totally lost. Although significant delays or losses of data are rare when wireless devices such as the Sprint PCS Connection Card (Merlin S620) CDMA modem are used in a normal manner with a well-constructed network, they should not be used in situations where failure to transmit or receive data could result in damage of any kind to the user or any other party, including but not limited to personal injury, death, or loss of property. SPRINT SPECTRUM L.P. accepts no responsibility for damages of any kind resulting from delays or errors in data transmitted or received using the Sprint PCS Connection Card (Merlin S620) CDMA modem, or for failure of the Sprint PCS Connection Card (Merlin S620) to transmit or receive such data.

## Safety and Hazards

---

Do not operate the Sprint PCS Connection Card™ (Merlin S620) in areas where blasting is in progress, where explosive atmospheres may be present, near medical equipment, life support equipment, or any equipment which may be susceptible to any form of radio interference. In such areas, the Sprint PCS Connection Card (Merlin S620) **MUST BE POWERED OFF**. It can transmit signals that could interfere with this equipment.

Do not operate the Sprint PCS Connection Card (Merlin S620) in any aircraft, whether the aircraft is on the ground or in flight. In aircraft, the Sprint PCS Connection Card (Merlin S620) **MUST BE POWERED OFF**. When operating, it can transmit signals that could interfere with various onboard systems.

The driver or operator of any vehicle should not operate the Sprint PCS Connection Card (Merlin S620) while in control of a vehicle. Doing so will detract from the driver or operator's control and operation of that vehicle. In some jurisdictions, operating such communications devices while in control of a vehicle is an offense.

# Terms and Conditions

## In This Section

---

- ◆ **Terms and Conditions of Services**
- 

This section contains the terms and conditions of service for your new Sprint PCS Connection Card™.

# Terms and Conditions of Service

---

## Terms and Conditions of Services

(Effective September 1, 2005)

Thanks for choosing Sprint. These terms and conditions are part of your agreement with Sprint for PCS (CDMA) Services. Separate terms apply for any iDEN products or services.

Please note these terms may not be the most current version. You can get a current version of the terms on our website at [www.sprint.com](http://www.sprint.com) or by requesting a copy from us at 1-888-211-4PCS.

A Para solicitar esta literatura en español, por favor contactar a 1-888-211-4PCS(4727).

**General.** This agreement ("Agreement") covers the terms on which we agree to provide and you agree to accept any service or product we make available to you, including your wireless services, wireless devices, etc. (collectively "Services"). You accept this Agreement when you do any of the following: (a) provide your written or electronic signature; (b) accept through an oral or electronic statement; (c) attempt to or in any way use any of the Services; (d) pay for any Services; or (e) open any materials or package that says you are accepting when you open it. The Agreement includes the terms in this document together with the terms associated with the Services you select (as described in our marketing materials, e.g., service plan brochures, or on our website). You represent that you are at least 18 years old. In this document, we use the words "we," "us," "our" or "Sprint" to refer to Sprint Spectrum L.P. and its affiliates doing business as Sprint PCS.

**Agreement.** We may change the Agreement at any time with notice. Any changes to the Agreement are effective when we publish them. If you use our Services or make any payment to us on or after the effective date of the changes, you accept the changes. If we change a material term of the Agreement and that change has a material adverse effect on you, you may terminate the Agreement without an Early Termination Fee by calling 1-888-567-5528 within 30 days after the changes go into effect. You understand and agree that taxes, Universal Service fees and other charges imposed by the government or based on government calculations may increase or decrease on a monthly basis, and that this paragraph does not apply to any increases in such taxes, Universal Service fees or other charges.

**Activating Service.** Before activation, we may check your credit and verify your identity. You must have and maintain satisfactory credit to receive and continue to receive Services. We may charge a nonrefundable activation fee, deposit, prepayment or other fee to establish or maintain Services.

**Term Commitments.** Unless we specifically tell you otherwise, our service plans require that you maintain service for a minimum term ("Term Service Plan"), usually 1 or 2 years. After satisfying this minimum term, your service plan will continue on a month-to-month basis unless you have agreed to extend the term for additional period(s). Certain service, promotional or product offers may require that you agree to or extend a Term Service Plan. As discussed below, we may charge you an Early Termination Fee if you deactivate a Term Service Plan before the end of the term.

**Using Services.** You agree to not use our Services in an unlawful, fraudulent or abusive manner. You may not resell or lease Services to anyone. Sprint is not responsible for any opinions, advice, statements, services applications or other information provided by third parties and accessible through our various Services, including the internet. Neither Sprint, its vendors or licensors guarantees the accuracy, completeness or usefulness of information that is obtained through these Services. You are responsible for evaluating such content. **You are also responsible for any use of our Services through any wireless device on your account including, but not limited to, use by children or minors. We strongly recommend that you closely monitor any such usage**

**Changing Services.** Changes to Services will generally be effective at the start of your next full invoicing cycle. In certain instances, the changes may take place sooner, in which case your invoice will reflect pro-rated charges. Certain changes may be conditioned upon payment of an Early Termination Fee or certain other charges.

**Termination of Services.** Consistent with this Agreement: (a) we may terminate Services at any time with notice to you and, in certain instances, without notice; and (b) you may terminate Services at any time with prior notice to us. Except as otherwise provided in this Agreement, IF YOU TERMINATE YOUR **TERM SERVICE PLAN** EARLY, OR WE DO SO FOR GOOD CAUSE, YOU WILL BE REQUIRED TO PAY THE APPLICABLE EARLY TERMINATION FEE ASSOCIATED WITH YOUR SERVICES. We will not charge an Early Termination Fee for deactivations consistent with our Return Policy or for service plans being provided on a month-to-month basis. If any Services are terminated before the end of your current invoicing cycle, we will not prorate charges to the date of termination, and you will not receive a credit or refund for any unused Services.

**Wireless Devices, Numbers & E-mail Addresses.** We did not manufacture your wireless device and we are not responsible for any defects or for the acts or omissions of the manufacturer. The only warranties on your device are any limited warranties extended by the manufacturer directly to you or passed on to you through us. Your device may not accept Services directly from any other carrier. You do not have any rights to any number, e-mail address or other identifier we may assign to your device or account; you may not modify, change or transfer any of these except as we allow or as allowed for by law. In certain instances, you may transfer your number from another carrier to us, or from us to another carrier. We do not guarantee that transfers to or from us will be successful. If you transfer your number away from us, the terms of this

Agreement (e.g., Early Termination Fee, etc.) still apply. If a transfer to Sprint is not successful, you will be responsible for any discounts provided to you with the purchase of your device. See our printed in-store materials or visit [www.sprint.com](http://www.sprint.com) for additional important information on number transfers.

**Coverage.** Available coverage areas for Services are generally identified in our mapping brochures and at [www.sprint.com](http://www.sprint.com). This may include coverage on our digital network (the "Nationwide Sprint PCS Network") as well as coverage we make available to you through agreements with other carriers ("off network" or "roaming" coverage). **All coverage maps are high level representations of outdoor coverage and there are gaps in coverage within areas shown as covered on the maps. Coverage is not available everywhere, nor can we guarantee you will receive coverage at all times, or without interruptions or delays (e.g., dropped calls, blocked calls, etc.) in the coverage areas we identify. Actual coverage and quality of Services may be affected by conditions within or beyond our control, including network problems, software, signal strength, your equipment, structures (including buildings in which you may be located), atmospheric, geographic, or topographic conditions.**

**Roaming Coverage.** You are roaming anytime your phone indicates that you are roaming. Roaming coverage is only available with certain devices and, unless included as part of your Services, will result in additional charges. Roaming calls placed "manually" (through an operator or with a credit card) will always incur separate and additional charges. Depending on your phone settings, you may automatically roam if there is a gap or interruption in coverage within the Nationwide Sprint PCS Network coverage area and roaming coverage areas. See your phone guide for how to adjust phone settings. Certain features and services may not be available in roaming coverage areas (including PCS Vision, voicemail, call waiting, call forwarding, etc.).

**Charges.** Carefully review the terms of your Services. You will be assessed charges based on the terms of your Services including, without limitation, monthly recurring charges and charges based on actual usage (e.g., charges for long distance, roaming, call forwarding, directory assistance, etc.). Airtime and other time based usage charges are calculated from when your device first initiates contact with a network until the network connection is broken, whether or not you were actually successful in connecting to the intended destination. However, you will not be charged for voice calls that ring and do not pick up, or if you get a busy signal. For voice calls received by your device, you are charged from the time shortly before the phone starts ringing until the call is terminated. You are charged for an entire voice call based on the time period in which the call is initiated. Partial minutes of use are rounded up to the next minute.

**Sprint PCS Vision Charges.** Vision usage is measured in bytes, not in minutes. Bytes are rounded up to kilobytes. Usage rounding occurs at the top of each clock hour while in a session and at the end of each session and is then charged to you based on the terms of your Services. Depending on your Services, usage may be charged against an

allowance or on a fixed price per kilobyte. Usage charges may be rounded up to the next cent at monthly or other intervals. In certain instances, you may not know that your session has not ended. As long as your device is connected to our network, you will incur data usage charges. You will be charged for all data directed to the internet address (or "IP address") assigned to your device, regardless of who initiates the activity or whether your device actually receives the data. This includes, but is not limited to, the amount of data associated with the particular information/item (e.g. game, ringer, email, etc.), additional data used in accessing, transporting and routing this information/item on our network, data from partial or interrupted downloads, re-sent data, and data associated with unsuccessful attempts to reach websites or use applications. Based on these and a number of other factors (e.g., the specific application, network performance, etc.) data used and charged to you will vary widely, even for the same activity. Estimates of data usage – for example, the size of downloadable files – will not be accurate or a reliable predictor of actual usage. Your invoice will not separately identify the number of kilobytes attributable to your use of specific sites, sessions or services.

**Taxes and Surcharges.** We invoice you for taxes, fees and other charges levied by or remitted directly to federal, state, local or foreign governments including, without limitation, sales, gross receipts, Universal Service, use, and excise taxes. If you claim any tax exemption, you must provide us with a valid tax-exempt document. Tax exemptions are not applied retroactively. We also invoice you for surcharges that we collect and keep to pay for the costs of complying with government programs such as number pooling and portability, and Enhanced 911 service; these charges are not the taxes nor government imposed assessments.

**Invoicing & Payment.** Invoicing cycles and dates may change from time to time. Monthly recurring and related charges for Services are generally invoiced one invoicing cycle in advance. Other charges are invoiced soon after they are incurred. Most usage is generally applied to the invoicing cycle in which they are incurred, but in some instances may be applied to subsequent invoicing cycles. You are responsible for all charges associated with any device activated on your account, regardless of who used the device. You must pay all charges by the due date on the invoice. **Past due amounts accrue late charges until paid at the rate of 5% per month or at the highest rate allowed by law and may result in immediate suspension of your account.** If you agree to any auto-payment option through banking or credit account, we may initiate payment from the account for all amounts we invoice you without additional authorization or notice. Based on your credit or payment history, we may require certain forms of guaranteed payment as a condition of maintaining Services. If we invoice you for amounts on behalf of a third-party, payments received are first applied to amounts due to us. You may be charged additional fees for certain methods of payment and for payments denied by a financial institution. Acceptance of payments (even if marked "paid in full") does not waive our right to collect all amounts that you owe us.

**Disputed Charges.** Disputes concerning any charges invoiced must be raised within 60 days of the date of the invoice. You accept all charges not disputed in this time period. Disputes can only be made by calling or writing us as directed on your invoice.

**Account Spending Limit & Deposits.** We may impose an account spending limit ("ASL") on any account without notice. We will notify you of an ASL based on your credit or payment history and may reduce the ASL at any time with prior notice. An ASL should not be relied on to manage usage on your account. We may suspend an account without prior notice when the account balance reaches the ASL, even if the account is not past due. Services can be restored upon payment of an amount that brings the account balance below the ASL and any past due amounts. If we require a deposit for you to establish or maintain an account, we will hold the deposit as partial guarantee of payment for Services. We may change the deposit amount at any time with notice for good reason. Except as we allow, a deposit may not be used to pay any invoice or delay payment. The deposit amount, the length of time we hold the deposit and changes to the deposit amount are determined based on your credit and payment history. The rate of interest, if any, on the deposit is subject to change. We may mix deposits with our other funds. If your account is terminated for any reason, we may without notice apply your deposit to any outstanding charges. We may send any remaining deposit amounts to your last known address within 75 days after account termination. If the funds are returned to us, you may claim these funds for one year from the date of return. Any money held during this one-year period will not accrue interest for your benefit and are subject to a servicing fee charged against the balance. You forfeit any portion of the money left after the one-year period.

**Other Sprint PCS Vision Terms.** You will not receive voice calls while using Vision. Vision is not available for use with server devices or host computer applications, other systems that drive continuous heavy traffic or data sessions, or as substitutes for private lines or frame relay connections. Unlimited Vision plans/options may not be used with Sprint PCS phones or smart phones being used as a modem in connection with other equipment (e.g., computers, etc.) through use of connection kits or other phone-to-computer/PDA accessories, or Bluetooth or other wireless technology. We may terminate services without notice for any misuse. You may have access to certain games, ringers, screen savers and other items on our Vision site ("Premium Services") that are available for an additional charge. You will be billed for Premium Service purchases on your Sprint PCS invoice based on the charges as specified at purchase. Subject to the terms of the content purchased, we may delete premium and non-premium items downloaded to any storage areas we may provide, including any pictures, games and other content. We may limit the amount of Premium Services you may purchase in a specific timeframe (month, week, day, or other time period).

**Voice Command.** Calls to 911 or similar emergency numbers cannot be placed through the Voice Command feature. See our printed in-store materials or visit [www.sprint.com](http://www.sprint.com) for additional important information on this option.

**Wireless Web.** Wireless Web Services may be available depending on your device and Service plan/option. This is not a Vision service. Usage is calculated on minutes used and generally deducts from your Service plan minutes. See our printed in-store materials or visit [www.sprint.com](http://www.sprint.com) for additional important information on this option.

**Lost or Stolen Equipment.** If your device is lost or stolen, please notify us immediately by calling 1-888-211-4PCS. **You are responsible for all charges incurred before you notify us of the loss or theft.** You agree to cooperate reasonably with us in investigating suspected unlawful or fraudulent use.

**Messaging.** You may incur charges in accessing, sending or receiving messages on your device. We may impose limits on the number of voicemail, text, email or other messages that can be retained through your account. Indicators of messages on your device, including mailbox icons, may not always provide an up to date indication of new messages and you may at times need to manually reset or clear your mailbox indicator. Legitimate messages may be interrupted by software aimed at prevention of SPAM or similar messages.

**Caller ID.** If you do not want people you call to receive the number assigned to your phone, call us at 1-888-211-4PCS for information about automatic Caller ID blocking. The number assigned to your phone can be blocked on a per-call basis by dialing \*67 + Destination Number + TALK (or similar key). Caller ID blocking is not available when using Vision or Wireless Web services.

**TTY Access.** A TTY (also known as TDD or Text Telephone) is a telecommunications device that allows people who are deaf or hard of hearing, or who have speech or language disabilities, to communicate by telephone. TTY doesn't work with all devices. If you have a TTY-capable device, it may not function effectively, or at all, when attempting 911 calls and should not be relied on for such calls.

**Disclaimer of Warranties.** WE MAKE NO REPRESENTATIONS OF WARRANTIES, EXPRESS OR IMPLIED, INCLUDING (TO THE EXTENT ALLOWED BY LAW) ANY IMPLIED WARRANTY OF MERCHANTABILITY OR FITNESS FOR A PARTICULAR PURPOSE CONCERNING YOUR SERVICES OR WIRELESS DEVICE. WE DO NOT PROMISE UNINTERRUPTED OR ERROR-FREE SERVICES AND YOU AGREE TO HOLD US HARMLESS FOR ALL SUCH PROBLEMS.

**Limitation of Liability.** Neither we nor our vendors, suppliers or licensors are liable for any damages arising out of or in connection with any: (a) act or omission by your, or another person or company; (b) providing or failing to provide Services, including deficiencies or problems with your wireless device, our network coverage or Services (e.g., dropped, blocked, interrupted calls/messages, etc.); (c) traffic or other accidents, or any health-related claims allegedly arising from the use of Services, any wireless devices or related accessories; (d) content or information accessed while using our Services, such as through the internet; (e) interruption or failure in accessing or attempting to access emergency services from your phone, including through 911,

E911 or otherwise; or (f) events due to factors beyond our control, including acts of God (including, without limitation, weather-related phenomena, fire or earthquake), war, riot, strike, or orders of governmental authority. **In the event we are found to be responsible to you for monetary damages relating to the Services (including wireless devices), you agree that any such damages will not exceed the pro-rated monthly recurring charge for your Services during the affected period.**

**NO CONSEQUENTIAL OR OTHER DAMAGES.** UNDER NO CIRCUMSTANCES ARE WE LIABLE FOR ANY INCIDENTAL, CONSEQUENTIAL, PUNITIVE OR SPECIAL DAMAGES OF ANY NATURE WHATSOEVER ARISING OUT OF OR IN CONNECTION WITH PROVIDING OR FAILING TO PROVIDE SERVICES, PHONES OR OTHER EQUIPMENT USED IN CONNECTION WITH THE SERVICES, INCLUDING, WITHOUT LIMITATION, LOST PROFITS, LOSS OF BUSINESS, OR COST OF REPLACEMENT PRODUCTS AND SERVICES. THIS SECTION SURVIVES TERMINATION OF THIS AGREEMENT.

**MANDATORY ARBITRATION OF DISPUTES.** INSTEAD OF SUING IN COURT, YOU AND SPRINT AGREE TO ARBITRATE ANY AND ALL CLAIMS, CONTROVERSIES OR DISPUTES AGAINST EACH OTHER ARISING OUT OF OR RELATING TO THIS AGREEMENT, INCLUDING, WITHOUT LIMITATION, THE SERVICES, ANY PHONES/EQUIPMENT, OR ADVERTISING, EVEN IF IT ARISES AFTER YOUR SERVICES HAVE TERMINATED, AND INCLUDING CLAIMS YOU MAY BRING AGAINST SPRINT'S EMPLOYEES, AGENTS, AFFILIATES OR OTHER REPRESENTATIVES, OR THAT SPRINT MAY BRING AGAINST YOU ("CLAIMS"). THE FEDERAL ARBITRATION ACT APPLIES TO THIS AGREEMENT AND ITS PROVISIONS, NOT STATE LAW, GOVERN ALL QUESTIONS OF WHETHER A CLAIM IS SUBJECT TO ARBITRATION. THIS PROVISION DOES NOT PREVENT EITHER YOU OR SPRINT FROM BRINGING APPROPRIATE CLAIMS IN SMALL CLAIMS COURT, BEFORE THE FEDERAL COMMUNICATIONS COMMISSION OR A STATE PUBLIC UTILITIES COMMISSION.

YOU AND SPRINT FURTHER AGREE THAT NEITHER SPRINT NOR YOU WILL JOIN ANY CLAIM WITH THE CLAIM OF ANY OTHER PERSON OR ENTITY IN A LAWSUIT, ARBITRATION OR OTHER PROCEEDING; THAT NO CLAIM EITHER SPRINT OR YOU HAS AGAINST THE OTHER SHALL BE RESOLVED ON A CLASS-WIDE BASIS; AND THAT NEITHER SPRINT NOR YOU WILL ASSERT A CLAIM IN A REPRESENTATIVE CAPACITY ON BEHALF OF ANYONE ELSE. IF FOR ANY REASON THIS ARBITRATION PROVISION DOES NOT APPLY TO A CLAIM, WE AGREE TO WAIVE TRIAL BY JURY.

A single arbitrator engaged in the practice of law will conduct the arbitration. The arbitration will be filed with and the arbitrator will be selected according to the rules of either JAMS or the National Arbitration Forum ("NAF"), or, alternatively, as we may mutually agree. We agree to act in good faith in selecting an arbitrator. The arbitration will be conducted by and under the then-applicable rules of JAMS or NAF, wherever the arbitration is filed or, if the arbitrator is chosen by mutual agreement of the parties, the then-applicable rules of JAMS will apply unless the parties agree otherwise. All expedited procedures prescribed by the applicable rules will apply. We agree to pay our respective arbitration costs, except as otherwise required by rules of JAMS or NAF, as

applicable, but the arbitrator can apportion these costs as appropriate. The arbitrator's decision and award is final and binding, and judgment on the award may be entered in any court with jurisdiction.

If any party files a judicial or administrative action asserting a claim that is subject to arbitration and another party successfully stays such action or compels arbitration, the party filing that action must pay the other party's costs and expenses incurred in seeking such stay or compelling arbitration, including attorneys' fees.

If any portion of this Mandatory Arbitration of Disputes section is determined to be invalid or unenforceable, the remainder of the Section remains in full force and effect.

**Miscellaneous.** You may notify us by calling us at 1-888-211-4PCS, or use that number to get our current address for written notice. We may send you notice to your last known address in our invoicing records, or by calling leaving you a voice message on your wireless device or home phone. Properly addressed written notice is effective three days after deposit in the U.S. mail, postage prepaid. This Agreement is governed by and must be construed under federal law and the laws of the State of Kansas, without regard to choice of law principles. If either of us waives or fails to enforce any requirement under this Agreement in any one instance, that does not waive our right to later enforce that requirement. If any part of this Agreement is held invalid or unenforceable, the rest of this Agreement remains in full force and effect. Section headings are for descriptive, non-interpretive purposes only. You may not assign this Agreement to any other person or entity without our prior written approval. This Agreement (including any referenced documents and attachments) makes up the entire agreement between us and replaces all prior written or spoken agreements.

# Index

---

## A

Alert Log 34, 49

## C

CDMA Networks 3

Close Button 26

Connection History 34, 49

Connection Status 26

## D

Device Info & Diagnostics 35, 50

Driver Installation 14

## E

Environmental Specifications 59

## F

Firmware Updates 16

## G

GO Button 29

## H

Hardware Specifications 63

## I

Indicator Area 28

Introduction ii

## L

Links 36

Lock Code 38

## M

Mechanical Specifications 59

Menu Button 25

Menu Options 31

Minimize Button 26

## N

NDIS 40

Novatel Wireless Network Adapter  
(NDIS) 40

## P

Package Contents 4

## R

Receiver Specifications 62

Regulatory Notices 65

Resource Conflicts 47

## S

Safety and Hazards 69

Settings 36

    General 37

    Optimization 37

    Sprint PCSVision - Novatel  
    Wireless 38

Software Installation 14

Software Specifications 60

Software Updates 35

Sprint Customer Service 8

Sprint PCS Business Connection  
55

Sprint PCS Connection Card

    Activating 20

    Care and Maintenance 9

    Inserting and Removing 17

    Reinstalling the Driver 44

    Software 7

    System Requirements 13

    Turning Off 18

Sprint PCS Connection Manager

    Establishing and Terminating  
    Connections 30

    Installing the Software 14

    Settings Menu 36

    Starting 23

    Window 24

Sprint PCS Mail 54

Sprint PCS Service

    Activating 8

Sprint PCS Vision 52-56  
  Business Connection 55  
  FAQs 56  
  Messaging 54  
  User Name 53  
System Tray Icons 30

## T

Terms and Conditions 71  
Transmitter Specifications 61  
Troubleshooting 41

## U

User Lock Code 38

## W

Web 53  
  Launching 53  
Welcome i